

## FORGINGS PRODUCED ON HAMMERS AND PRESSES LENGTH/WIDTH TOLERANCES

### SCOPE

1. Length/Width Tolerances represent variations in dimensions measured parallel to the fundamental parting line of the dies. Normally, they are in addition to tolerances for die wear.

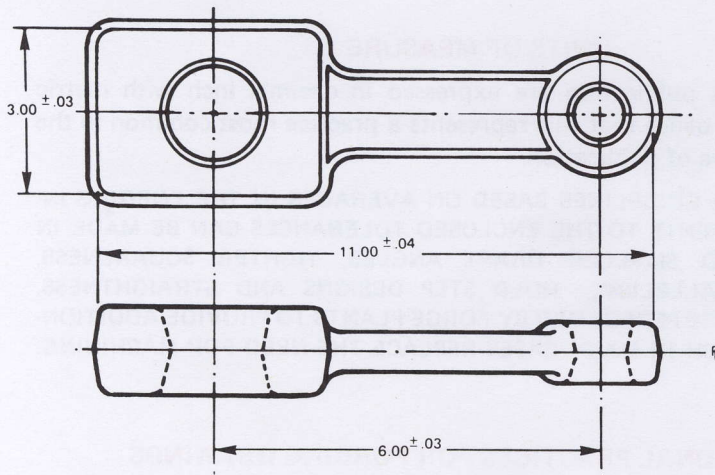
### TOLERANCE

2. The Length/Width Tolerance is  $\pm 0.003$  in. per inch,  $\pm 0.003$  mm per mm and applies to all dimensions of length/width including diameters. This tolerance includes allowance for shrinkage, die sinking and die polishing variations. (The minimum should be plus or minus .03 in. or .8 mm.)

### UNITS OF MEASURE

3. Length/Width Tolerances, normally combined with tolerances for die wear are expressed as decimal inch in units of 0.01 or greater and expressed as decimal millimeter in units of .1 mm or greater. Decimals used in computing tolerances are totaled and raised to the next highest .01 in the inch system or .1 in the metric system.

Fig. 1



METRIC CONVERSION	
INCH	mm
.03	.8
.04	1.1
3.00	76.2
6.00	152.4
11.00	279.4

LENGTH & WIDTH